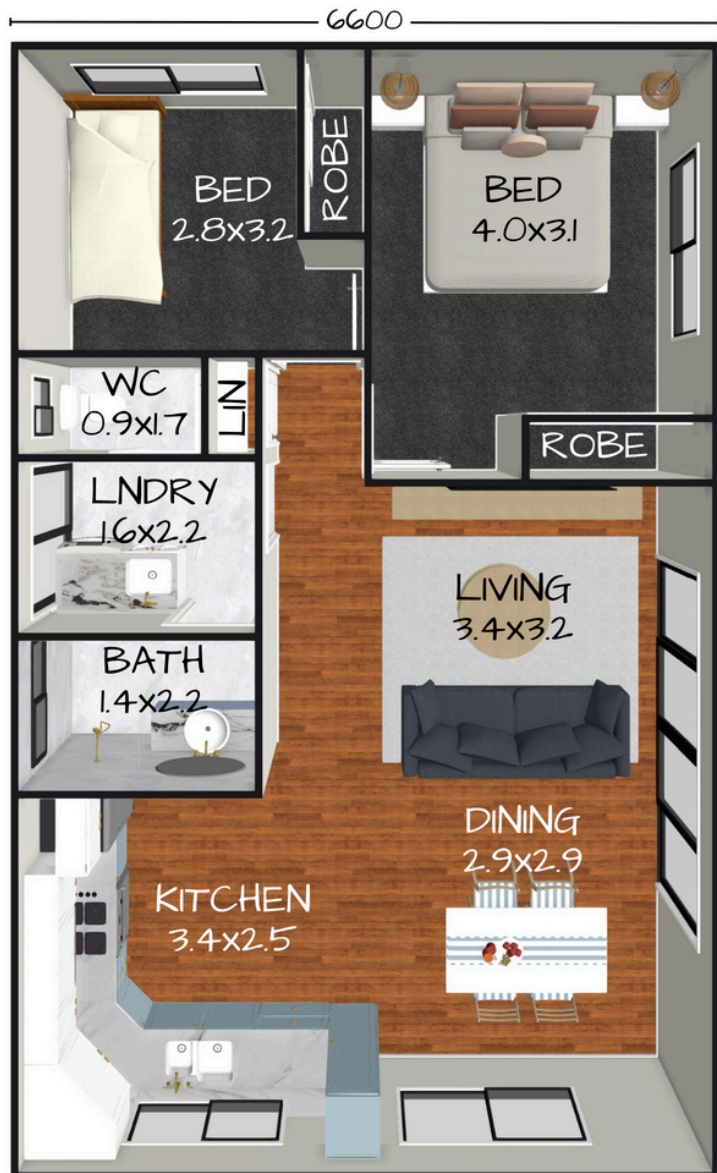


THE CITYSCAPE



70m²
LIVING AREA

2 **1** **1**



DIY KIT PRICE - \$51,670*

- +Pre Assembled Steel Wall Frames & Roof Trusses
- +Roof & Ceiling Battens
- +450mm Eaves
- +2.55mH Ceilings
- +Sliding Windows & Doors
- +CGI Roof Sheets, Fascia & Gutters
- +Horizontal CGI Wall Sheets & Trims
- +N2 Wind Rating
- +Fastener Kit

STEEL FLOOR SYSTEM - \$17,720

- +Steel C-Purlin Bearers
- +Steel C-Purlin Joists
- +Yellow Tongue Flooring Throughout
- +FC Tile Underlay for Bathroom

INTERNAL LINING KIT - \$16,965

- +Plasterboard incl. all plaster products
- +Skirting & Architraves
- +90mm Cove Cornice
- +Internal Doors (excl. robes)
- +Thermal Break
- +External Wall Insulation
- +Roof Blanket

OPTIONAL EXTRAS

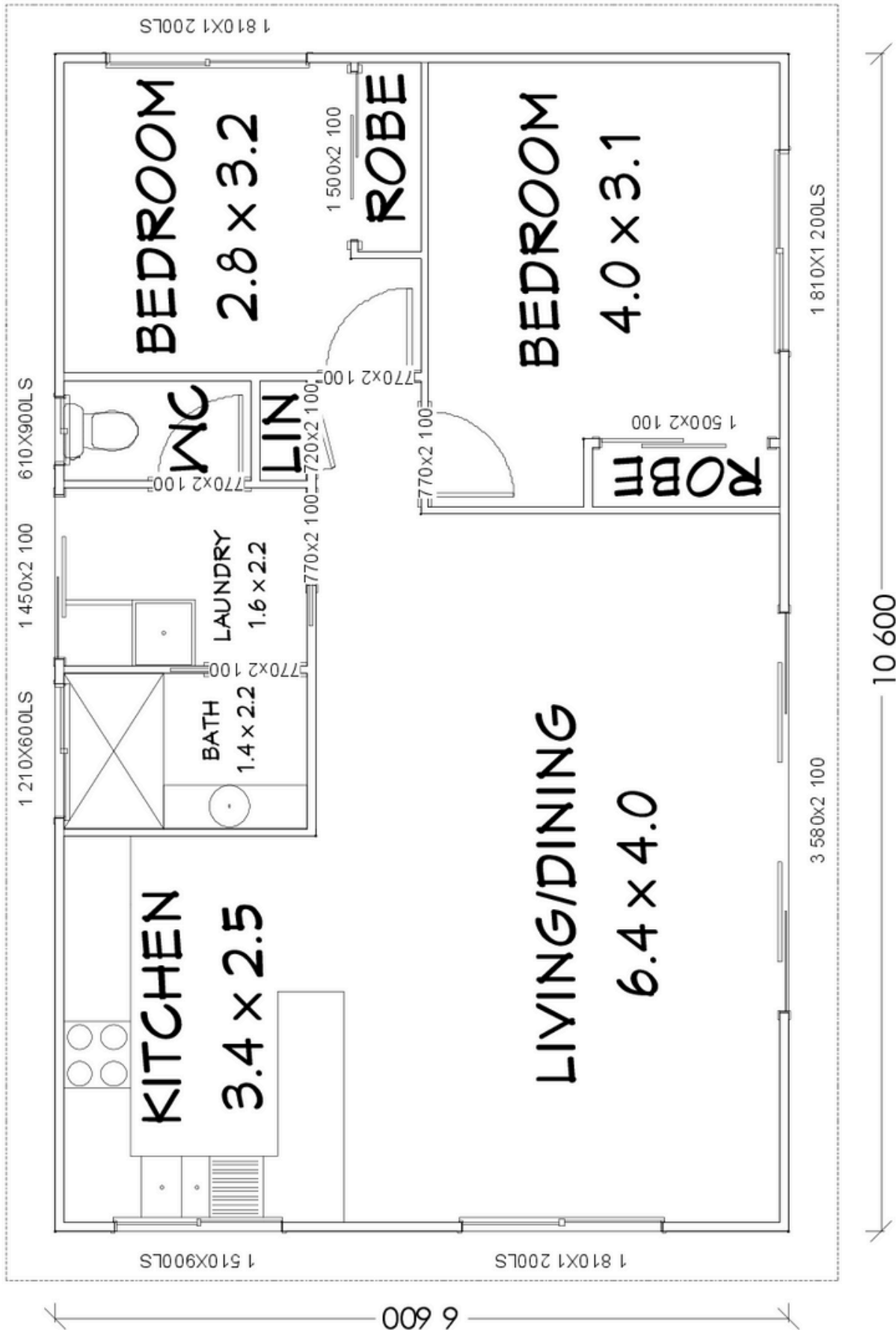
HardiePlank 230mmW FC Weatherboard in smooth or woodgrain finish is available for an additional \$1,295.

Engineering Certificate (Form 15) is available for an additional charge.

Thermal Break & Roof Blanket available for an additional \$3,860.

*Bluescope ColorBond CGI Roof & Wall Sheets are available for an additional \$2,590. Applies to all kits supplied outside of SE QLD.

THE CITYSCAPE



Floorplan has been prepared for illustrative purposes and should be used as a guide only. Plans are not to scale and all images, renders, and inclusions shown are indicative only. Colours, furniture, cabinetry, tiles, paint, PC items, floor coverings, electrical, plumbing, vehicles, fencing, paving, landscaping, and pools are artists impressions only, and are not included. Refer to package inclusions for full details. Pricing and availability is subject to change without notice. © Copyright Frame Steel Pty Ltd 2013.